

INTRODUCED BY WHATLEY LANE



SADDLERS
— COURT —

BURY ST EDMUNDS, SUFFOLK

CONTENTS

03 Welcome

04 Bespoke Finish

07 Prime Location

09 Excellent Connectivity

10 Floorplan

15 About

WELCOME

Blending elements of traditional British heritage with contemporary, yet timeless design, we bring you Saddler's Court; a bespoke collection of nine stunning apartments, situated in the centre of the affluent, and vibrant town of Bury St Edmunds.

Apartment 2 presents exquisite brand new ground floor living accommodation within this exclusive gated development. Individually finished to the highest of standards, with a large south facing Juliet balcony accessed via French doors and rare loft storage space.

Kitchen and living areas are arranged as an open plan design, creating light-filled spaces to entertain or simply unwind in. Whilst integrated video entry, secure on-site allocated parking and EV charging points provide added convenience. Saddler's Court is the ideal residence for modern living.



Gated allocated parking with electric charge point



BESPOKE FINISH

The high level of customisation has been designed with wellbeing and convenience first and foremost. From the style of the kitchen cabinetry and worktops complete with full range of integrated appliances, to the bathroom tiling and lighting, together with the south-facing Juliet balcony, this stunning first floor apartment has no expense spared.





SPECIFICATION

Kitchen

- Kitchen cabinetry in dove grey, white metro tiles and Carrera marble effect worktops
- Integrated Lamona oven
- Integrated Lamona hob with extractor
- Integrated Lamona fridge freezer
- Integrated Lamona dishwasher
- Integrated Lamona washer/dryer

Shower Room

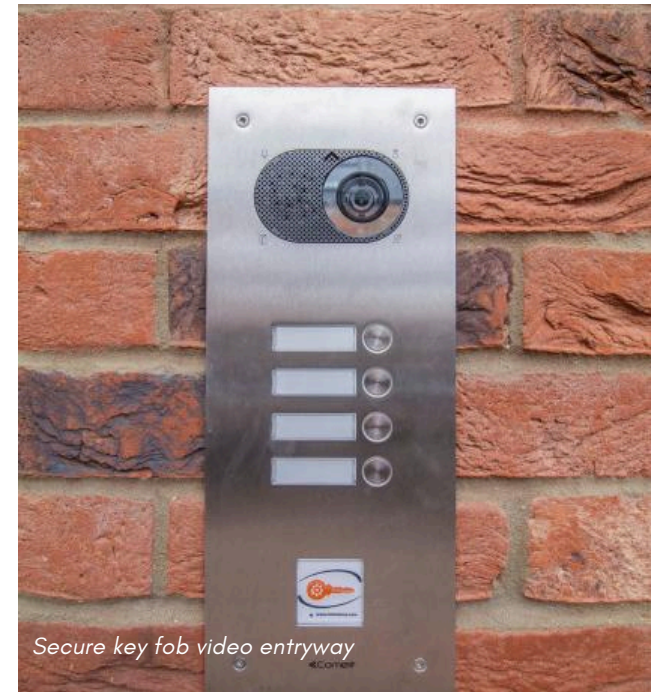
- Chrome fittings
- Concealed, dual-flush cistern
- Porcelanosa fully tiled marbled walls and flooring for a wet room effect
- Heated towel rail
- LED mirror with de-mister

Interior

- Customisable flooring
- BT fibre optic connection
- LED downlights throughout
- USB sockets
- TV/Satellite aerial
- Rare loft storage space with stairs

Exterior

- Gated, allocated parking space
- Electric Vehicle charging point
- Bicycle store
- Secure video entry system
- South-facing Juliet balcony





Angel Hill, Bury St Edmunds

PRIME LOCATION

Bury St Edmunds is an historic and vibrant market town, located in the heart of Suffolk, and with connectivity to the A14/M11 London, Cambridge, Norwich, Ipswich, and Stansted Airport.

Saddler's Court is nestled in a prominent position, adjacent to the landmark Arc Shopping Centre and Waitrose superstore.

There is a twice-weekly open-market, offering a wonderful selection of local produce. In addition, there are a variety of independent boutiques, shops, cafes and restaurants, including Suffolk's only Michelin star restaurant.

Entertainment includes the Theatre Royal, Abbeygate Cinema, and The Apex - a state-of-the-art venue, hosting a range of exhibitions and music events. Other amenities include a range of health clubs, leisure facilities and excellent schools.



St John's Street



The Angel Hotel



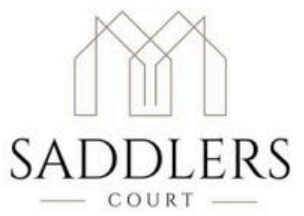
The Arc shopping centre

KING'S ROAD

Apartments
1-4

Apartments
5-9

Waitrose - Acre Shopping Centre footpath



EXCELLENT CONNECTIVITY

WALK

Town Centre	1 min
Bus Station	6 mins
Rail Station	14 mins

ROAD

A14	4 mins
Ipswich	36 mins
Cambridge	35 mins
Stansted Airport	55 mins

RAIL

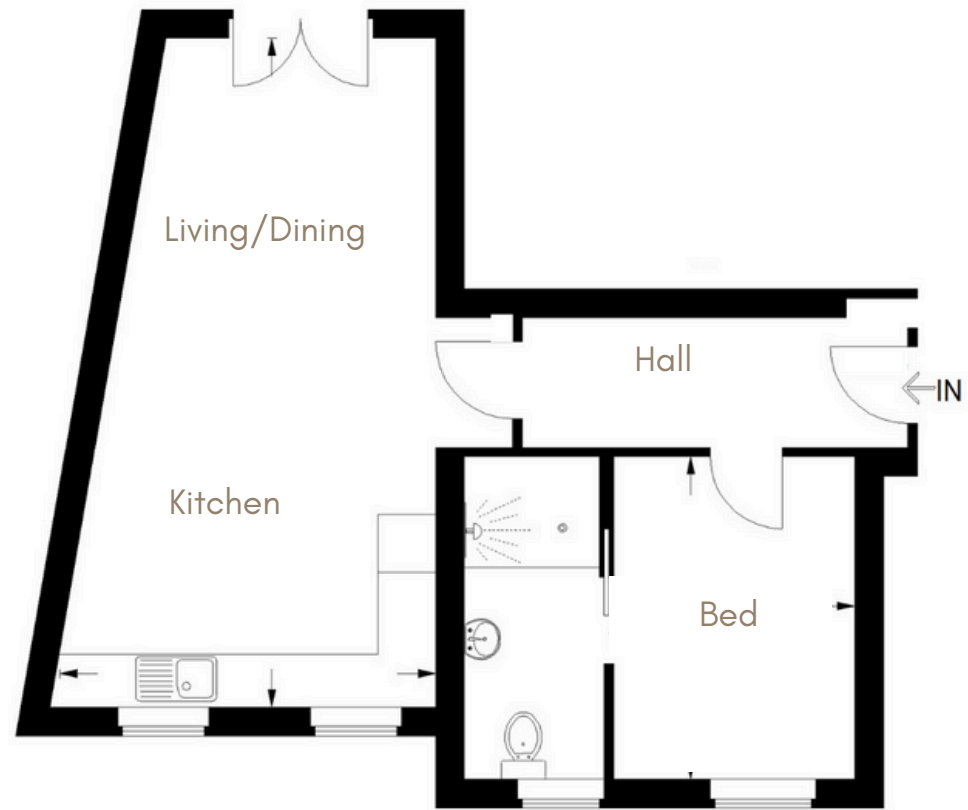
Newmarket	20 mins
Ipswich	36 mins
Cambridge	42 mins
London Liverpool Street	1hr 50 mins





N

Apartment 02



Total: 488ft (45.3m) [excludes attic storage space] - **Revision**

Kitchen/Living/Dining	22'9" x 12'9"	6.94m x 3.89m
Bedroom	18'6" x 8'10"	3.35m x 2.50m

ABOUT



Freshwater Estates, established in 2009, remains a family-owned and managed company. They provide uniquely designed homes across Suffolk, along with personalised customer service and first-class aftercare.

Committed to offering fully customisable fit outs to suit clients' needs and ensure no two home interiors are the same.



From a rural cottage to a country house, period townhouses to new homes, Whatley Lane is a full service agency powered by a suite of first-rate marketing as standard. Dynamic, independent, bespoke and problem solving.

Covering West Suffolk and East Cambridgeshire, they cater for all clients' sales, lettings, valuation, development and investment needs.



Rooted in Whatley Lane's business is their tree planting mission. As advocates for a sustainable built environment, carbon off-setting efforts focus on reforestation projects in Madagascar, Uganda, Argentina and Mozambique.

For each property sold or let, a contribution of their commission goes towards planting trees. View their forest at: www.whatley-lane.co.uk/sustainability.



SADDLERS
— COURT —



For lettings enquiries, contact Whatley Lane:

01284 765 256 | bury@wlea.co.uk | whatley-lane.co.uk

1 Churchgate Street, Bury St Edmunds. IP33 1RL

Designed and produced by Whatley Lane Estate Agents

The information contained in this brochure is for general guidance only. The computer generated images are intended to give an indication of what the properties will look like but are not necessarily representative in every respect. Purchasers are advised that floor layouts etc, may vary from apartment to apartment and the Company reserves the right to alter these details at any time and without prior notice. Intending purchasers should satisfy themselves by inspection or otherwise of items and specification included. This information does not constitute a contract, part of a contract or warranty. External materials are subject to local authority approval.