



HABERDEN PLACE

Southgate Street | Bury St. Edmunds





Impressive Sitting Room with large panoramic sliding doors to garden and rare open-countryside views in a town centre setting

HABERDEN PLACE

SOUTHGATE STREET | BURY ST. EDMUNDS | SUFFOLK

- Three-bedroom townhouse in a very private location & completely refurbished to a very high standard
- Peaceful setting; exceptional town centre convenience within historic Bury St. Edmunds & A14 access
- Private residents' driveway leads to an allocated parking space & benefit of large garage
- RAF Lakenheath & Mildenhall are easily commutable within 25 mins
- Light & spacious living room with panoramic sliding doors
- Useful downstairs cloakroom, entrance hall & storage areas
- Open-plan kitchen/dining area, fully fitted with built-in appliances
- Good-sized front & rear gardens with breath-taking countryside views
- Well-appointed bathroom with unusually large skylight
- ****Good news: pet-friendly property!****

Fully refurbished, three bedroom townhouse situated in a tranquil setting with parking space, garage & gardens

Positioned in a virtually hidden location is this unique three-bedroom townhouse, which has undergone a thorough refurbishment by its landlord. Well-planned accommodation over two floors includes a large living space with panoramic floor-to-ceiling doors that boast breath-taking views over open grounds and uninterrupted countryside while benefitting from town centre convenience. The open-plan kitchen/dining area has been fitted to a high standard and makes the most of its U-shape design with window centrepiece. The bathroom has an unusually large skylight with glazed star gazing dome above and a further large dome in the landing area lets in plentiful light. Downstairs cloakroom and good storage.

Situated just off a prime residential street, a concealed private residents' driveway provides vehicular access to allocated parking and the additional benefit of a large garage with powered door. There are good sized gardens to the front and rear of the property; principally laid to lawn with a seating terrace. Of particular note is the incredibly private and peaceful setting.

2 Haberden Place is perfectly located in a desirable residential area, moments from the historic Cathedral town centre of Bury St. Edmunds and provides excellent A14 access from Southgate Street. Cambridge is easily accessible as are RAF Lakenheath and Mildenhall. Refer to our Situation page to discover Suffolk.

ACCOMMODATION

WITH APPROXIMATE MEASUREMENTS

No 2 Haberdern Place displays extremely well-planned features for the enjoyment of tenants following comprehensive refurbishment to a very high standard. The versatile, well-appointed and superbly arranged accommodation measures approximately 970 ft² (90.1 m²) which will suit a broad range of tenants – all who require parking, town convenience with the added bonus of a peaceful setting.

Ground Floor

ENTRANCE HALL 7'2" x 6'6" (2.18m x 1.98m)

Sliding doors with privacy glass open into Entrance Hall. Cloak hooks. Cupboard housing washing machine. Engineered dark oak wood flooring. Two flush ceiling lights. Door to:

CLOAKROOM

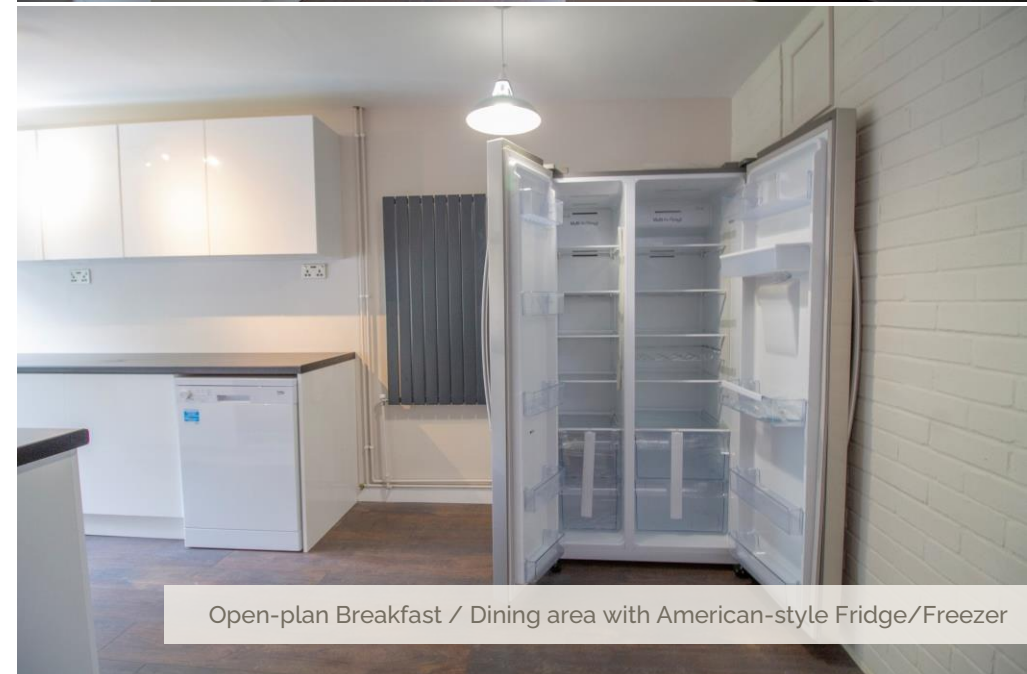
Wall-mounted corner basin. Low level wc. Vinyl floor. Flush ceiling light.

KITCHEN / DINING AREA 17'9" x 7'8" (5.41m x 2.33m)

Window to front garden aspect and parking / garaging beyond. Completely refurbished kitchen/breakfast room to a very high standard. The U-Shaped kitchen space is extensively fitted with white high gloss wall and base units featuring push buttons beneath a black granite effect U-Shaped worktop with LED task lighting above. Stainless steel sink and drainer inset with mixer tap. Integrated appliances include: dishwasher, washing machine, twin fan oven/grill, four ring ceramic hob with stainless steel extractor fan above. Full height Kenwood American-style fridge/freezer with water dispenser in white. Cupboard housing wall-mounted boiler. Row of ceiling spotlights. Engineered dark oak wood flooring. 4x USB ports at counter top level. Wall-mounted designer radiator. Pendant light. Exposed painted feature brick wall. Understairs storage recess and additional storage cupboard. A pair of contemporary floor to ceiling glazed casement doors open into:



Newly fitted kitchen with built-in appliances



Open-plan Breakfast / Dining area with American-style Fridge/Freezer



Spacious Master Bedroom with built-in wardrobes

LIVING ROOM 14'0" x 14'0" (4.27m x 4.26m)

An impressive space with a series of panoramic floor-to-ceiling sliding doors bring the incredible outside views inside while letting in a great amount of natural light. TV and phone points. Newly carpeted. Exposed painted feature brick wall. Row of ceiling spotlights. Radiator. Stairs rising to First Floor.

First Floor

LANDING

Light and airy landing area with a spectacular roof dome lets in an abundance of natural light. Newly carpeted. Ceiling pendant light. Doors to:

BEDROOM ONE 14'1" x 9'7" (4.29m x 2.93m)

A very spacious master bedroom with two large windows boasting fantastic and interrupted views across the rear garden, open grounds and countryside beyond. Large built-in wardrobe with sliding door system. Newly carpeted. Ceiling pendant light with shade. Two radiators.

BATHROOM TWO 14'4" x 7'9" (4.36m x 2.37m)

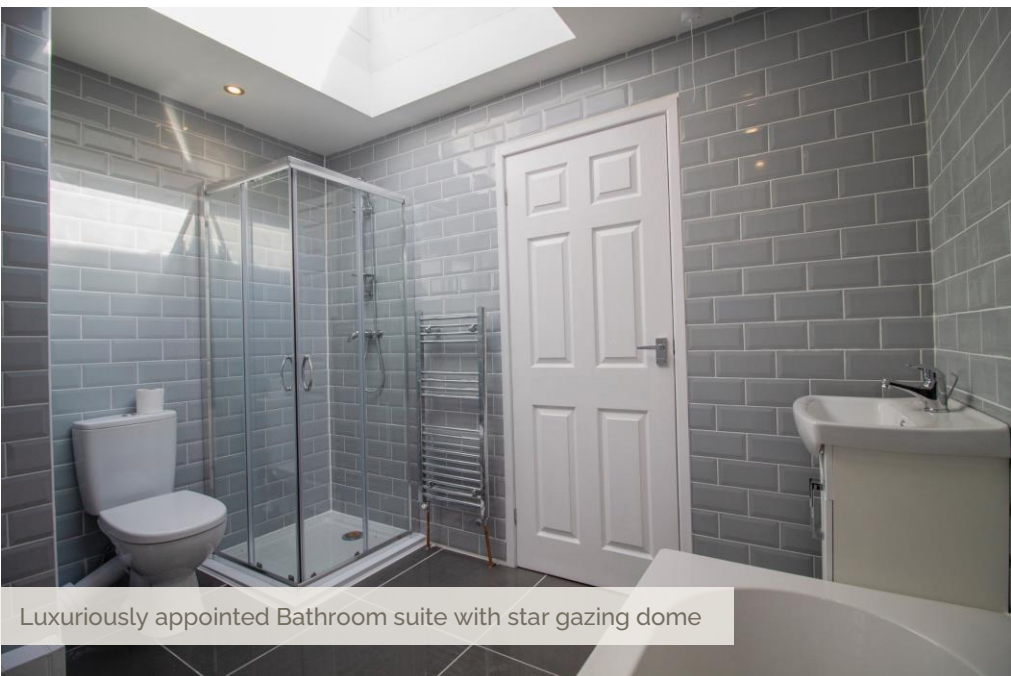
Large double bedroom with window to front aspect. Cupboard housing immersion tank. Newly carpeted. Ceiling pendant light with shade. Radiator.

BATHROOM THREE 10'11" x 5'11" (3.33m x 1.80m)

Window to front aspect. Newly carpeted. Ceiling pendant light with shade. Radiator.

BATHROOM

A large and well-appointed bathroom with floor to ceiling grey metro wall tiles complementing large high gloss granite floor tiles. Of particular note is the large skylight and glazed star gazing dome. A suite comprising corner shower cubicle with sliding doors and shower attachment, panelled bath, low level dual flush wc, pedestal wash basin with mixer tap. Heated towel rail. Illuminating mirror. Recessed lighting.



Luxuriously appointed Bathroom suite with star gazing dome



Abbey of St. Edmundsbury

PROVENANCE

The site of Haberden is known to date back to medieval times.

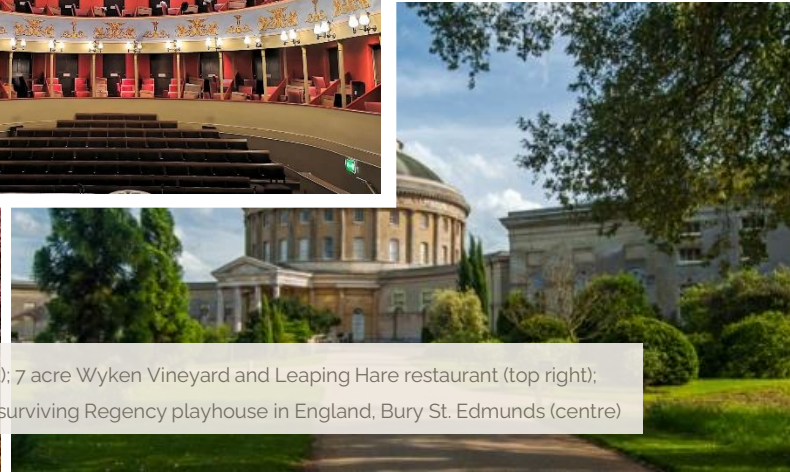
According to historical records, in 1281, the manor of Haberden, or Haberden, was granted to the Sacrist of the abbey by Henry, son of Nicholas of St Edmund. At the time this would add to the sacrist's income, and included a mill, and at least 51 acres. As the abbey gained more and more of the local pasture land, any common rights hitherto exercised by local people were gradually extinguished by the new owner.

GARDENS & PRIVATE RESIDENTS' COURTYARD / PARKING

A large and concealed private residents' courtyard creates a welcome approach with parking and garaging. The front garden is laid mainly to lawn with specimen trees interspersed. To the rear is a fully enclosed garden in a commanding position with countryside views in the distance.



Outside: good-sized rear garden, allocated parking & large garage



Nearby amenities: red heather in Cavenham Heath Nature Reserve (left); 7 acre Wyken Vineyard and Leaping Hare restaurant (top right); majestic National Trust Ickworth House and Park (bottom right); oldest surviving Regency playhouse in England, Bury St. Edmunds (centre)



DISCOVER SUFFOLK

Bury St. Edmunds is an extremely attractive and prosperous market town located in the heart of Suffolk. The A14 gives fast access to the east coast ports, Ipswich, Cambridge, the Midlands and to Stansted and Cambridge Airports, as well as London via the M11. The Arc is the town's latest, modern retail outlet and is a popular shopping destination. All major food stores are well-represented, including Waitrose. There is a twice-weekly open-market in addition to a variety of eateries, attractions and places to stay. The Millennium Tower that crowns St. Edmundsbury Cathedral is the landmark. There is plenty on offer to keep families entertained. The Apex Arts Centre is a state-of-the-art live entertainment venue which hosts exhibitions and events. Watch a great performance at the Theatre Royal – the only surviving Regency playhouse in England. Other amenities include a range of health clubs, swimming pools and leisure facilities. Bury St. Edmunds has a real sense of community and is a truly friendly town. Ideally placed to offer a fantastic lifestyle to visiting forces based at RAF Lakenheath and RAF Mildenhall.

Horseracing is at neighbouring Newmarket, a number of interesting golf courses nearby, sailing and water sports on the River Orwell and an outstanding 50 mile (80 km) heritage coastline and an Area of Outstanding Natural Beauty encompassing Aldeburgh and Southwold.

SITUATION



(A14) 0.8 mile
A11 (M11) 20 (30) miles
Newmarket 18 miles
Ipswich 25 miles
Cambridge 28 miles



Suffolk Heritage Coast
Aldeburgh
(1 hr / 44 miles)



From Bury St. Edmunds
London Kings Cross
(97 mins)
From Cambridge
London Liverpool Street
(129 mins)
Cambridge
(57 mins)



London Stansted Airport
(1 hr / 40 miles)
Heathrow Airport
(2 hrs / 95 miles)



There is a wide choice of excellent schooling, both Private and State, within the area.
Private includes: Culford School (1-19); South Lee School (2-13).
State includes: Guildhall Feoffment Primary School (5-11); King Edward VI School (11-18).
University of Suffolk at West Suffolk College - Further Education.



Flood lit garage with electric door and additional parking



Landing ceiling dome lets in plentiful natural light

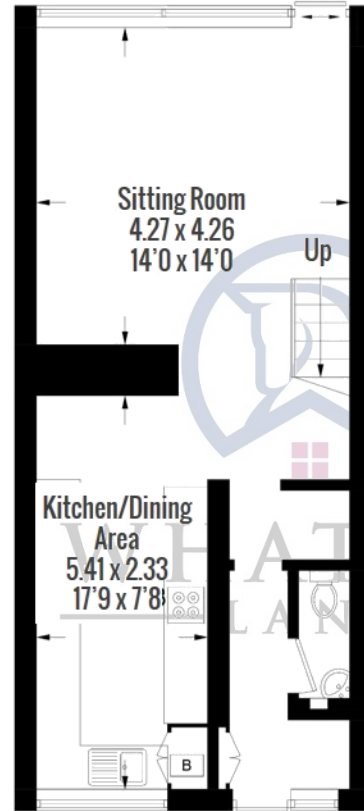
FLOORPLAN

APPROXIMATE GROSS INTERNAL AREA

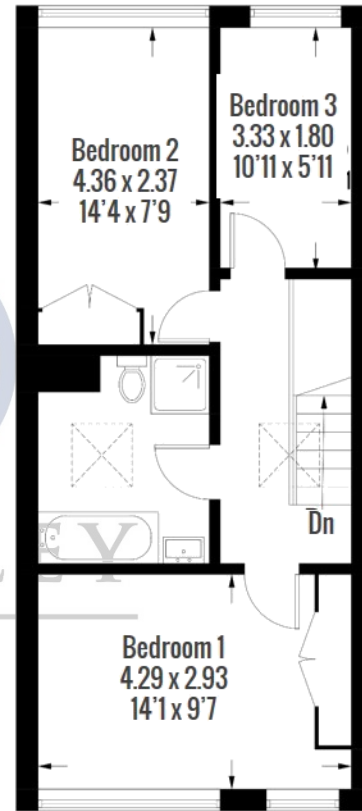
= 970 ft² (90.1 m²)



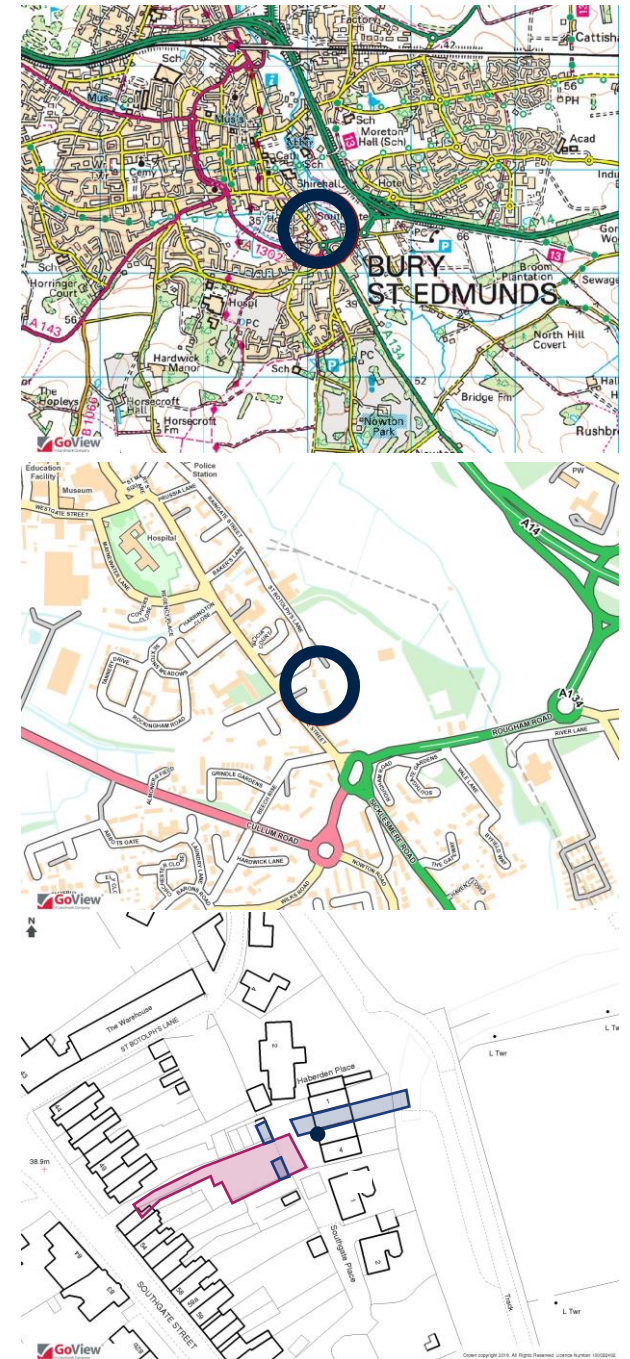
This plan is for layout guidance only. Drawn in accordance with RICS guidelines. Not drawn to scale, unless stated. Windows & door openings are approximate. Whilst every care is taken in the preparation of this plan, please check all dimensions, shapes & compass bearings before making any decisions reliant upon them.



Ground Floor



First Floor



GENERAL INFORMATION

TENURE

Property is to rent and available from **20 January 2024**.

SERVICES

Mains water, drainage, electricity. Gas-fired central heating.

LOCAL AUTHORITY

West Suffolk Council (01284 763 233)

Band B – £1,622.75 (2024/2025). NB Charge exempt for USAF personnel.

EPC rating – D.

VIEWING ARRANGEMENTS

Strictly by prior appointment through the landlord's sole managing agent: Whatley Lane. If there is anything of particular importance, please contact us to discuss in advance of the viewing.

DIRECTIONS (IP33 2BH):

From London/Cambridge/Newmarket (by car) leave the M11 at junction 9 and take the A11 towards Newmarket. Continue on the A14 towards Bury St. Edmunds. Exit the A14 at Junction 44, signposted 'Bury St. Edmunds East' and follow the 'Town Centre/A134 Sudbury' signposts. Passing the BP Garage and Bury Rugby Club on your right, take the third exit at the roundabout into Southgate Street. The driveway to Haberden Place parking and garaging can be found 50 metres on the right hand side.

From RAF Lakenheath / Mildenhall either follow the A1101 all the way directly into Northgate Street, passing through the town centre into Southgate Street, or go southbound on the A11 connecting to the A14 at junction 38 heading towards Bury St. Edmunds until exiting at Junction 44 (continue as above).

From the town centre (on foot) leave the Market Square, proceed in a southerly direction along Southgate Street where Haberden Place will be found on your left hand side at the top of the hill.



Bury St. Edmunds

1 Churchgate Street
Bury St. Edmunds IP33 1RL
+44 (0) 1284 765 256
bury@wlea.co.uk

London (Chelsea)

5 Milner Street
London SW3 2QA
+44 (0) 207 243 0964
london@wlea.co.uk

www.whatley-lane.co.uk
www.rightmove.co.uk
www.countrylife.co.uk

Disclaimer 1. Whatley Lane Estate Agents (the "Agents") are not authorised to make or give any representations or warranties in relation to the property either here or elsewhere, either on their own behalf or on behalf of their client or otherwise. The Agents assume no responsibility for any statement that may be made in our offices. These particulars do not form part of any offer or contract and must not be relied upon as statements or representations of fact. 2. Any areas, measurements or distances are approximate. The text, images and plans are for guidance only and are not necessarily comprehensive. It should not be assumed that the property has all necessary planning, building regulation or other consents and the Agent have not tested any services, equipment or facilities. Purchasers must satisfy themselves by inspection or otherwise. 3. The Agents would urge any potential purchaser to contact our offices to establish availability of this property prior to commencing any journey of distance to view. Details designed and produced by Whatley Lane Marketing | JAN 2025.

Ecologi



Proudly in association with our London Office

F.W.GAPP
EST. 1919